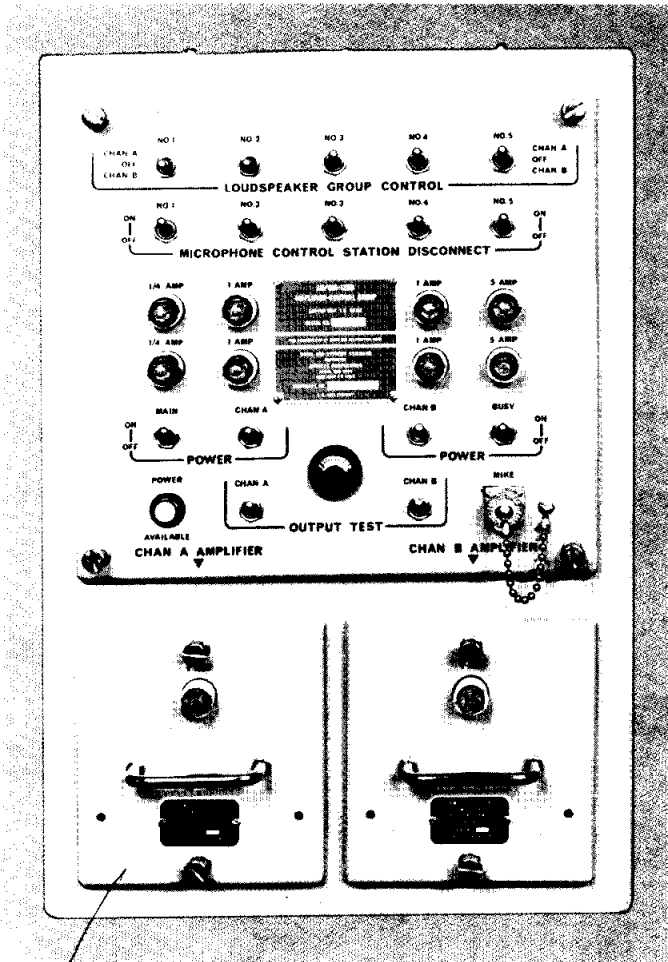


**DYNALEC**  
 CORPORATION

**AMPLIFIER-CONTROL GROUP**  
 AN/SIA-120B

**DESIGN SPECIFICATION**

MIL-A-21577/8

**TECHNICAL MANUAL—**

NAVSEA 0965-LP-122-3010

**DYNALEC PART**

60555-000

**FEATURES**

- 40 Watts continuous audio power through two modular solid state amplifiers for shipboard announcing.
- Can be used in conjunction with other equipment for 2MC, 26MC, and 29MC circuit capability.
- Input facilities for five microphone control stations and one alarm oscillator group.
- Output facilities for five local loudspeakers (for each microphone station) and for five loudspeaker groups in the announcing system.
- Busy indicator circuit; remote control extension circuits; alarm input priority.
- Cable entrance plates top and bottom; drop down front panel for easy interior access.
- Meets environmental requirements of MIL-I-983.

**RELATED EQUIPMENT**
**EQUIPMENT**

Microphone Control Station  
 Microphones  
 Loudspeakers      High Power  
                           High Power, adjustable  
                           Low Power  
                           Low Power, adjustable  
 Alarm Generator

**NOMENCLATURE**

IC/MSB-2  
 M-124/SIC; M-125/SIC;  
 LS-387B/SIC  
 LS-388B/SIC  
 10" Maricom  
 LS-444/WIH

**DYNALEC PART**

60173  
 60163-004/001  
 61716-200  
 61716-201  
 61700-007A  
 60100-002  
 61601-000

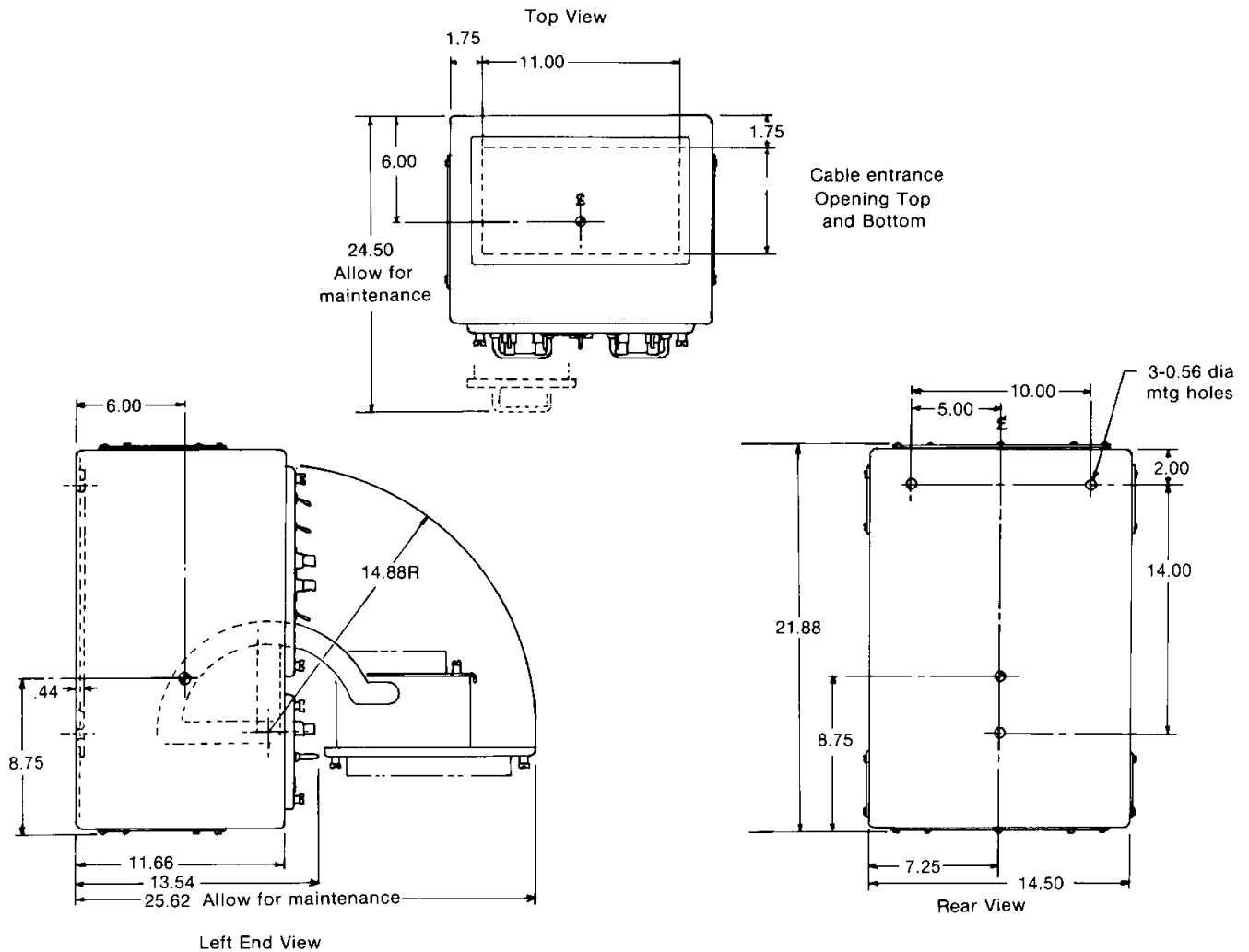
- A.M. 40788

# AN/SIA-120B

## SYSTEM DESIGN CHARACTERISTICS

Input Power	115 VAC, 60 Hz, Single Phase
Output Power	70 Volts RMS at 20 Watts
Frequency Response	200 to 5,000 Hz
Input Impedance	150 ohms
Output Impedance	250 ohms—70v
Dimension	
Length	21.88" (55.58 cm)
Width	14.50" (36.83 cm)
Depth	13.54" (34.39 cm)
Weight	60 lbs (27.27 Kg)
Shipping Weight	65 lbs. (29.55 Kg)

## MOUNTING INFORMATION



87 WEST MAIN STREET  
SODUS, NEW YORK 14551

TELEPHONE 315-483-69  
or 716-546-8168  
CABLE DYNALEC SODUS  
TELEX 510 250 2382