



INTERIOR VOICE COMMUNICATIONS SYSTEM COMPONENTS

DESIGN SPECIFICATIONS

TERMINAL, TELEPHONE, JACKBOX, TA-1002/STC-2(V)

RCA SPECIFICATION 8558733

TERMINAL, TELEPHONE, AUTOMATIC, TA-997/STC-2(V)

RCA SPECIFICATION 8558732

DYNALEC PART

**JACKBOX TERMINAL
AUTOMATIC TERMINAL**

66400-200

66411-000

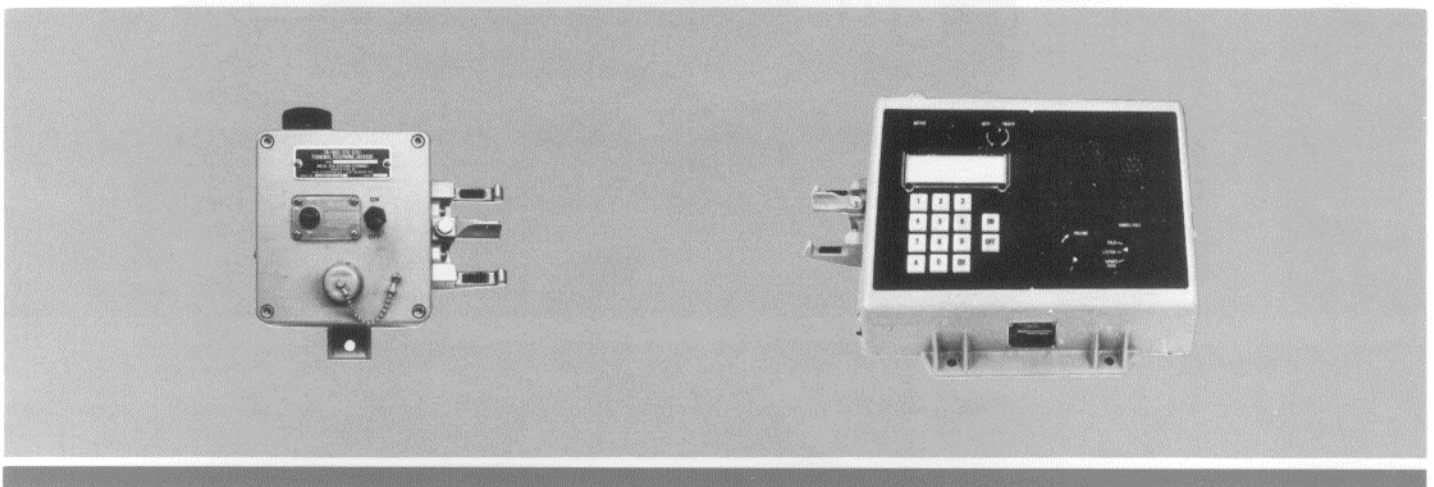
FEATURES

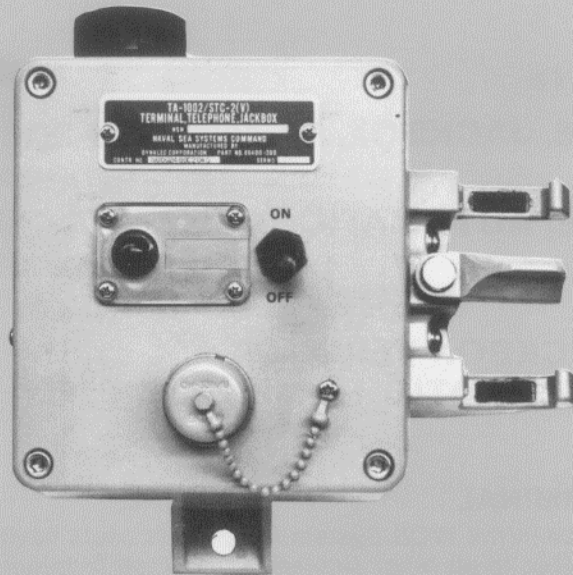
TELEPHONE JACKBOX TERMINAL

- Designed for Type II, Class D, use in the IVCS System to connect users having a common task or interest. All terminal users can talk and listen to all other similarly connected terminals. In special cases they can jointly transmit and receive over radio sets connected to the net circuit.
- Jackbox contains an On/Off switch, a status indicator, a removable handset cradle, and a U-79/U female connector with cap and chain for an accessory handset (not supplied). The cradle can be mounted on either side of the terminal.
- Jackbox amplifier exhibits a nominal gain in the receive mode of $6 \text{ dB} \pm 2 \text{ dB}$ at 1K Hz.
- Jackbox has two mounting feet for bulkhead or desk mounting. The front panel can be rotated 180° so that the controls will always face the operator.

AUTOMATIC DIAL TERMINAL

- Designed for use in the IVCS from which users may initiate address and participate in private, conference, net, shore telephone, public address, radio and sound power communications.
- Includes an illuminated 12-pushbutton keyboard, built-in loudspeaker, annunciator, status indicator, On/Off switch, an illuminated director list holder, volume control, a Talk-Listen-Hands Free mode switch, and a Hands Free indicator lamp on a 10° sloping panel.
- Contains a voltage regulator and an amplifier.
- Has an accessory U-79/U female connector with cap and chain and a handset cradle which can be mounted on either side of the terminal cabinet.
- Can be activated and deactivated by calling party.
- Terminal has three mounting feet for bulkhead or desk mounting. The front panel can be rotated 180° so that the controls will always face the operator.





TERMINAL, TELEPHONE, JACKBOX, TA-1002/STC-2(V)



TERMINAL, TELEPHONE, AUTOMATIC, TA-997/STC-2(V)

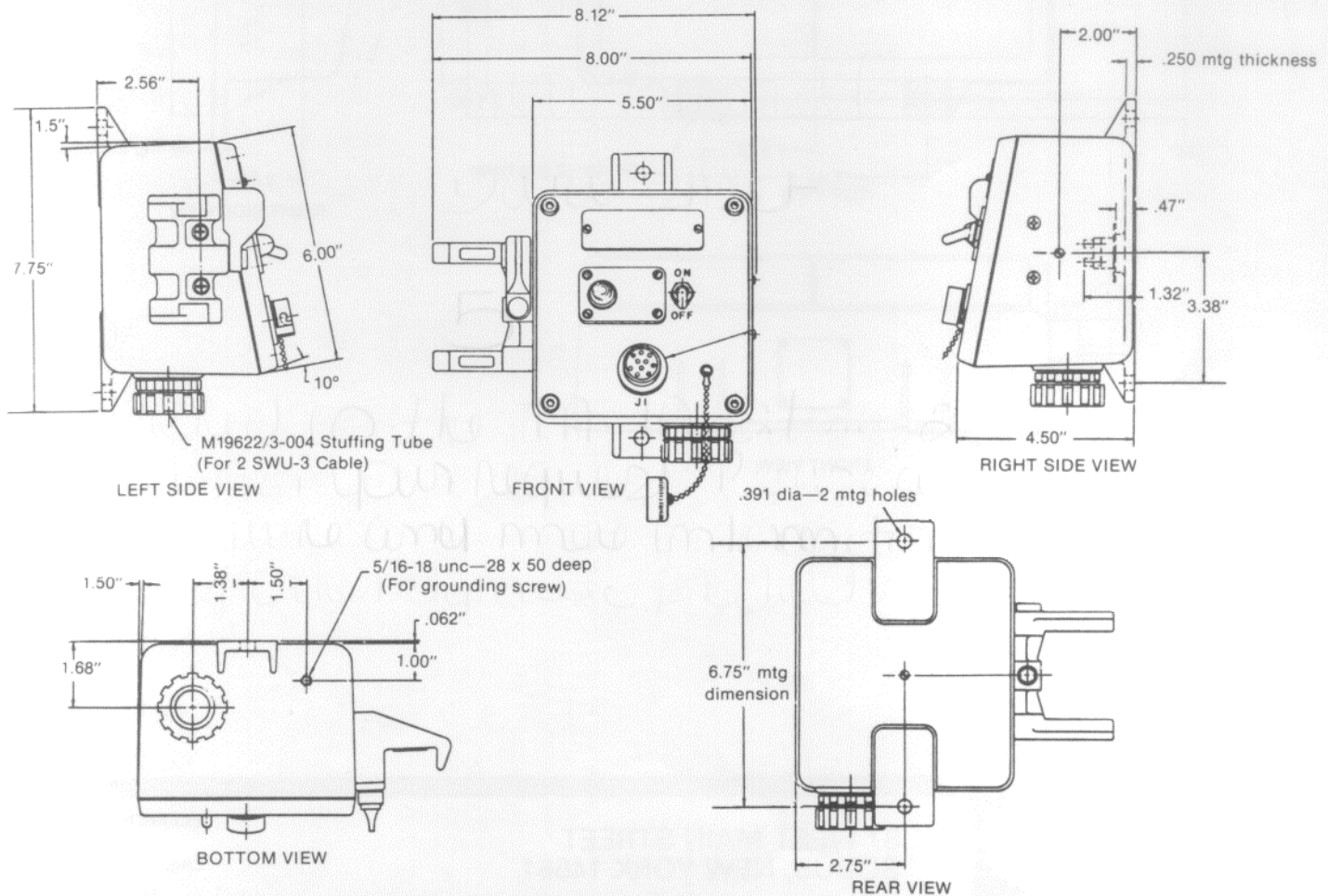
DESIGN CHARACTERISTICS

| | JACKBOX TERMINAL | AUTOMATIC TERMINAL |
|--|---|--|
| Power Input | | 21-28 VDC (from ICSC) Nominal 24 VDC |
| Maximum Current Draw (Idle Status) | 50 ma | 100 ma |
| Maximum Current Draw (Active Status) | 450 + 100/60 ma | 600 + 100/-0 ma |
| Talk Signal Gain (With microphone input of 10.4 millivolts) | 0.78 VAC at 1000 Hz | |
| Talk Distortion | 3% Maximum at 300 Hz | |
| Listen Signal Gain (With input from ICSC from 0.78 volts at 1000 Hz nominal) | | Headphone signal output will be 0.32 ± .08 volts |
| Listen Distortion | | |
| Frequency Response | 300 to 6,000 Hz within 1 dB at 1KHz reference | |
| Accessory Supply Voltage | 10.6 VDC 5% 2.75 watts maximum | |

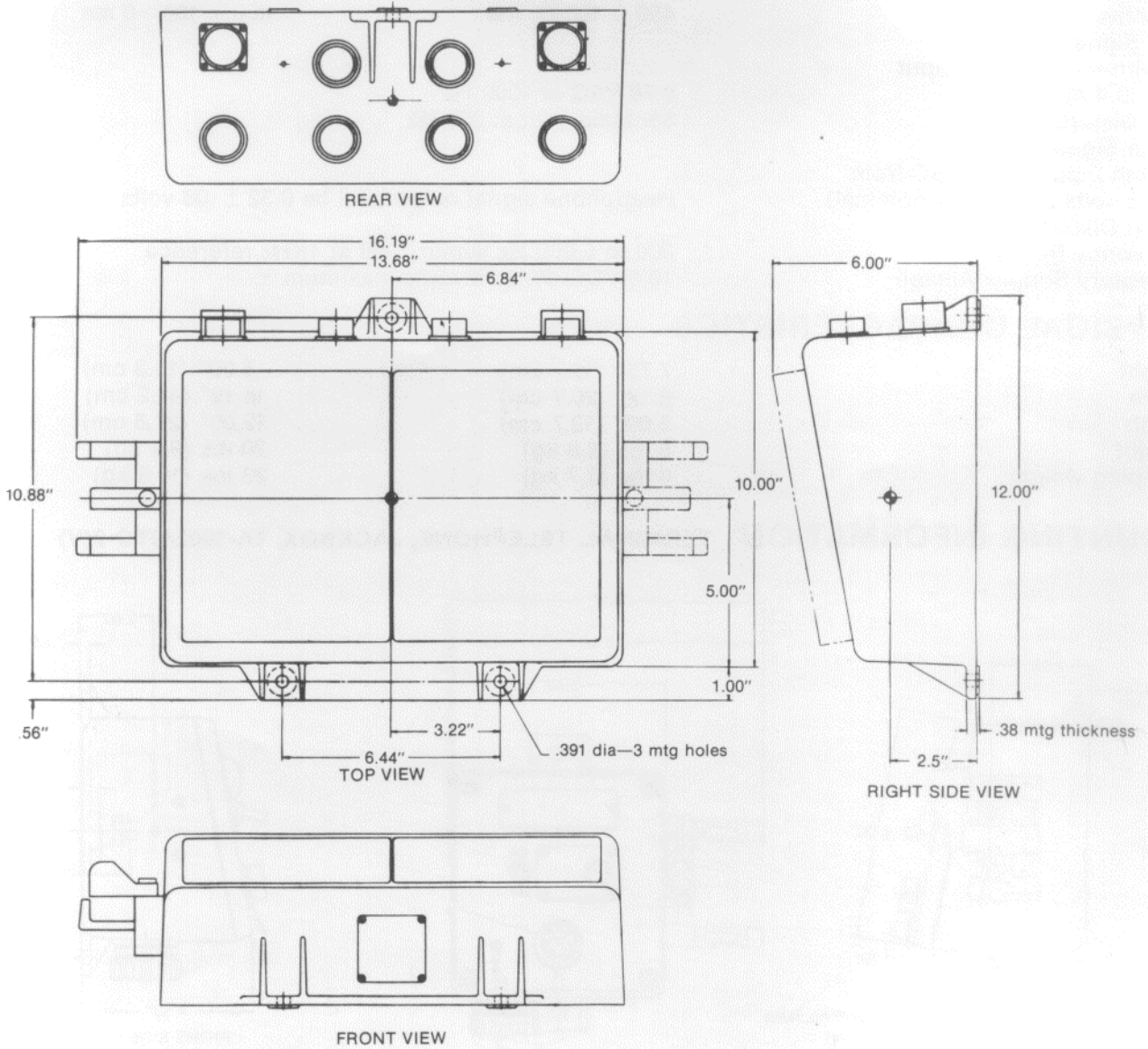
PHYSICAL CHARACTERISTICS

| | | |
|-----------------|-----------------|------------------|
| Height | 7.75" (19.7 cm) | 6.00" (15.3 cm) |
| Width | 8.12" (20.7 cm) | 16.19" (41.2 cm) |
| Depth | 5.00" (12.7 cm) | 12.00" (27.5 cm) |
| Weight | 6 lbs (2.8 kg) | 20 lbs (9.1 kg) |
| Shipping weight | 8 lbs (3.7 kg) | 23 lbs (10.5 kg) |

MOUNTING INFORMATION TERMINAL, TELEPHONE, JACKBOX, TA-1002/STC-2(V)



MOUNTING INFORMATION TERMINAL, TELEPHONE, AUTOMATIC, TA-997/STC-2 (V)



87 WEST MAIN STREET
SODUS, NEW YORK 14551

TELEPHONE 315-483-6923
FAX 315-483-2298
CABLE DYNALEC SODUS
TELEX 510 250 2382